



Rev 0
06/23



ELASTOP

Resins for civil engineering, stopping water infiltration and soil consolidation.



DESCRIPTION

Polyurethane resin suitable for sealing cracks, joints, gaps, as well as for consolidating crushed areas, both in rock and concrete, in the presence of moisture.

When the product comes into contact with water, a chemical reaction quickly occurs that leads to the formation of a closed-cell consolidating foam, characterized by absolute impermeability and chemical stability.

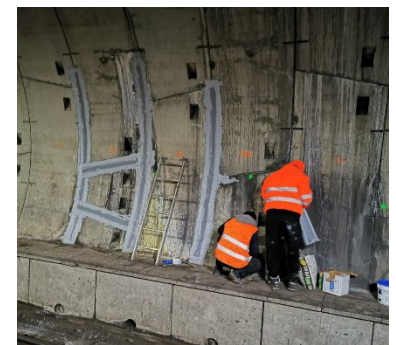
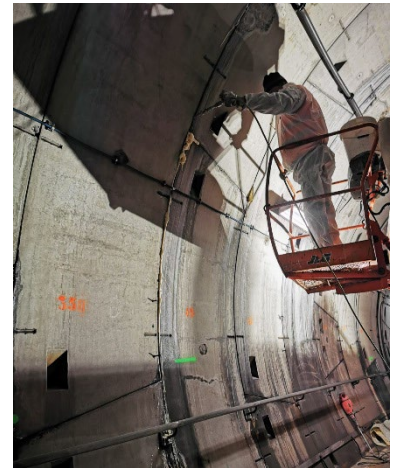
The expansion time is linked to the amount of catalyst introduced and mixed with the base, as well as to the amount of water and temperature present at the time of use.

SPECIFICATIONS

(at +25°C and 60% R.H.)

Chemical nature		
Elastop base		polymeric polyurethane and additives
Elastop catalyst		plasticizers-accelerators mix
Aspect		
Elastop base		brown liquid
Elastop catalyst		transparent amber liquid
Own weight		
Elastop base		1,210 ± 0,037 Kg/dm ³
Elastop catalyst		1,100 ± 0,033 Kg/dm ³
Mixing ratio		100:1 to 100:5 depending on the desired reaction rate.
Pot life mixture		more than 8 hours (the formation of a thin crust of hardened product does not affect the workability of the mixture)
Implementing rules		low pressure or casting pumps, after careful mixing of the base with the catalyst in the chosen ratio
Reaction time: (N.B. the product expands only in contact with water)		
BASE+CATALYST (100+1 parts weight)		3–4 minutes
BASE+CATALYST (100+2 parts weight)		1–2 minutes
BASE+CATALYST (100+5 parts weight)		20–30 seconds
Appearance of the hardened (foamed) product		yellowish closed-cell semi-flexible foam
Operating temperature* ¹		+3°C / +50°C
Serving temperature* ²		-30°C / +80°C
* ¹ The operating temperature: is the temperature at which the product can be applied.		
* ² The serving temperature: it is the "working temperature" of the product, i.e. the temperature to which the product must withstand after application.		

Note: both components A and B can be stored at low temperatures for a few days (up to -30°C, e.g. during transport in the winter months); in any case, in order to obtain the best results



SHEET



TEKNA CHEM S.p.A.

Plant: Renate (MB) - Via Sirtori, z.i. 20838 - Tel. +39 0362.91.83.11

Web: www.teknachemgroup.com - E-mail: info@teknachemgroup.com - Fax: +39 0362.91.93.96



during application, we suggest storing the product not below +5°C. Component A is very sensitive to moisture, so we recommend opening the drums only shortly before use and in case of humid environment, we recommend using the entire contents. In winter, we suggest transport in insulated containers.

PACKS

Elastop base	20 kg
Elastop catalyst	1 kg

STORAGE AND CONSERVATION

12 months, in original sealed packaging, stored in a cool, dry place (+5°C/+30°C)

LEGAL

The information contained in this technical sheet, although representing the most advanced stage of knowledge, does not exempt the user from carrying out accurate preliminary tests in his own conditions of use and operation. We therefore decline any responsibility for the improper use of the product.

